

**ENGCSOFT™**

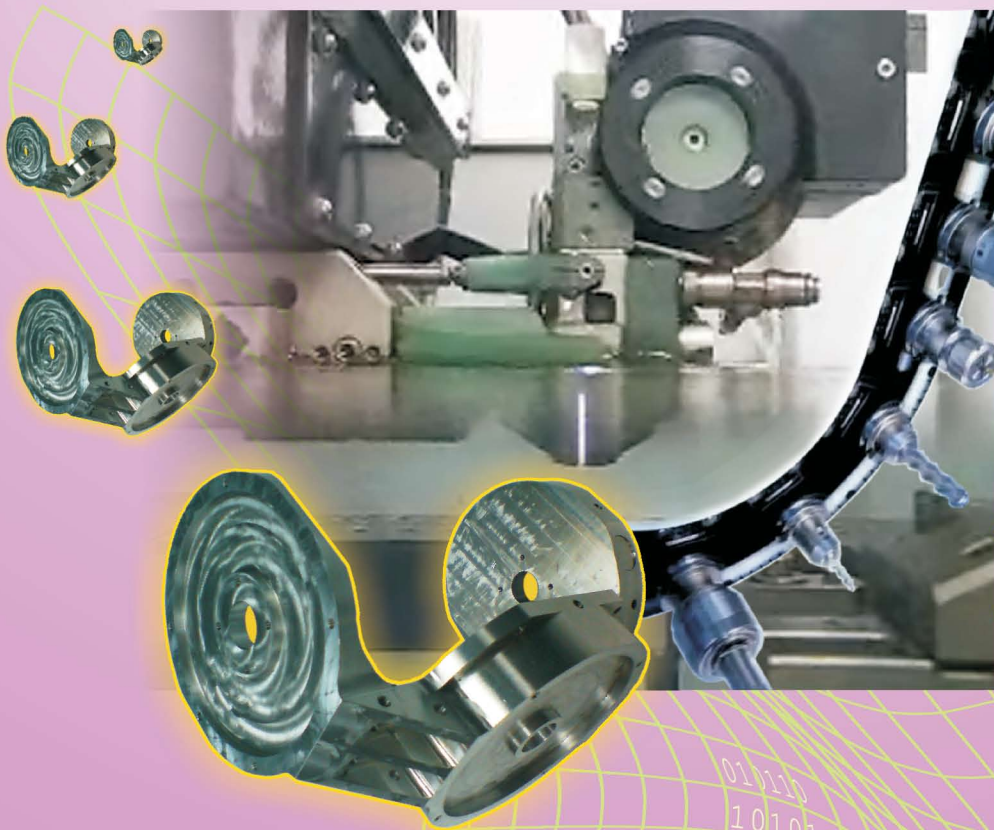
Innovative Software. Assured Productivity.  
www.enggsoft.com || www.enggsoft.net

# acamEngineer®

● acamMill ● acamWcut ● acamAdim

acamMill

*Engineering Solutions the best performance in its class*



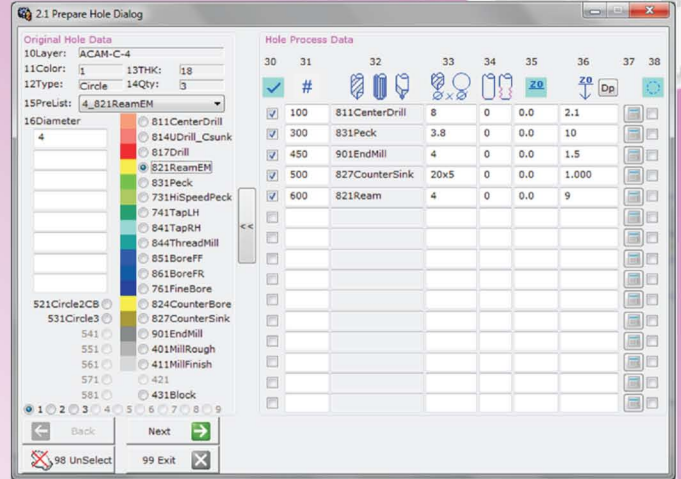
# Production Milling Module

A fast and simple, factory certified CAM system is the Process Oriented Programming of 2D and 2.9D milling. With a powerful practical knowledge-based machining technology that requires little programming skills yet allows the optimization of productivity of the CNC machining centre.

### AcamMill Advantages:

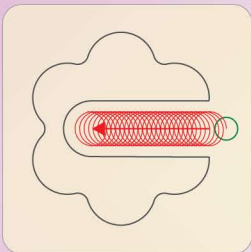
- Users definable cutting processes.
- Auto tool selection with tool library.
- Colors visual for easy selection and viewing.
- Datum and depth can be picked directly from the side view of the drawing.
- Same job in multi views programming.
- Auto feed rate reduction at internal ARC.
- Auto RPM & feed rate adjustment accordingly to cutter length projection.

## Process Oriented Programming



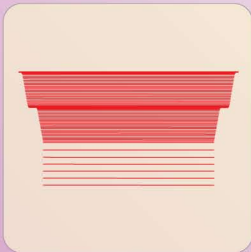
### SPECIAL FEATURES -

Trochoidal milling allow high material removal to save machining time



### SPECIAL FEATURES -

Separate down step for radius, taper & vertical wall



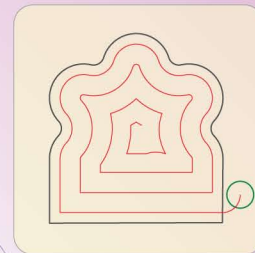
### SPECIAL FEATURES -

Text engraving on radius or slope surface



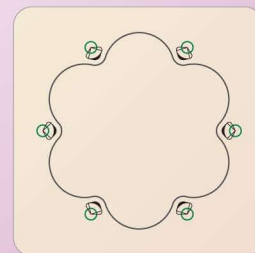
### SPECIAL FEATURES -

Special approach for face milling



### SPECIAL FEATURES -

Auto generation of cutter path for corners remaching



## This what we can do it...

### For Profile Milling..

- Separate 3D step for taper & radii.
- Text engraving in straight line or arc.
- Plunge cut machining with/without taper.
- Cutter path simulation for profile and cycle.
- Manual cutter path modification is possible.
- Cutter path verification for small corner radius.
- 2.9D profiling with different top and bottom radii.
- Regular pocket with different taper angles for roughing & finishing.

### For Cycle-Milling..

- Automatic generation of step drill for large diameter hole.
- Automatic depth for center drill of different diameters.
- Automatic generation of pre-ream and tap drill hole.
- Automatic mirror file for holes with hidden line.
- Automatic depth calculation for plate drilling.
- Automatic recognition of tap hole.

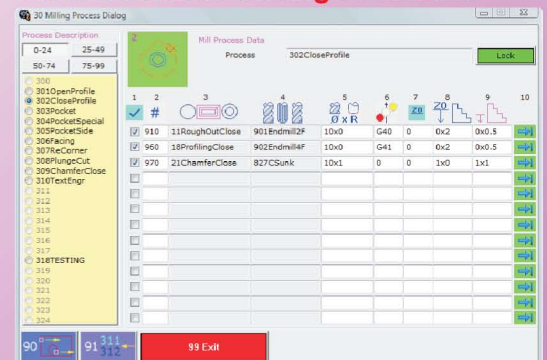
Etc.

### SPECIAL FEATURES -

Intelligent Variable offset save up to 30% of machining time



## Users Definable Cutting Processes



## Auto Tool Selection With Library

1 No	2 Process	3 Hd	4 Qty	5 Seq#	6 Dia	7 R/Pch	8 ZD	9 MaxDisp	10 T	11 H	12 Step/D	13 RPM	14 DownF	15 MFE	16 MFR	17 R	18 MoveZ	19 CoolOn	20 CoolOff	21 HolderDia	22 HolderLen
1	811CenterDrill	5	100	8.00	0.00	0.000	3.100	1	1	1	0.0	1100	100	0	2.0	100.0	MO8	MO9	0	0	0
2	831Peck	3	300	6.00	0.00	0.000	21.303	2	2	2	2.0	1000	110	0	2.0	100.0	MO8	MO9	0	0	0
3	821Peck	1	300	10.00	0.00	0.000	22.904	3	3	3	2.5	620	100	0	2.0	100.0	MO8	MO9	0	0	0
4	831Peck	1	300	16.00	0.00	0.000	24.307	4	4	4	3.0	450	90	0	2.0	100.0	MO8	MO9	0	0	0
5	827CounterSink	2	900	20.00	0.00	0.000	7.000	5	5	5	1.0	125	50	40	2.0	100.0	MO8	MO9	0	0	0

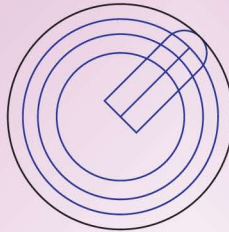


## 4 Axis Wire EDM Module

The acamWcut module is a highly functional "factory certified" CAM system and support 2-axis and 4-axis wire EDM machine. The software provide an extensive knowledge based machining technology with stored information likes wire diameter, materials and cutting strategies that provide a productive method to generate highly efficient machining codes. The acamWcut is easy and quick to learn yet powerful for Wirecut machining with many key features.

### Die Profile Cutting Features

Coreless cutting for small hole  
 Able to do forward and reverse cut  
 Possible with auto hold and overcut  
 With start hole outside of the profile  
 Hole with different approach directions  
 Able to do different approach undercuts  
 Able to define different approach patterns  
 Overcut is possible to have negative value  
 More...



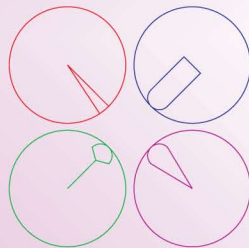
### Punch Profile Cutting Features

Auto single or multi holds  
 Auto part off with 2nd stop  
 Able to define sharp corner cutting  
 Auto part off with material left for grinding  
 Display of maximum holding length available  
 Possible to have circular approach & departure  
 Auto part off with recess as no grinding is required  
 Auto part off with the same number of cut as punch  
 More...



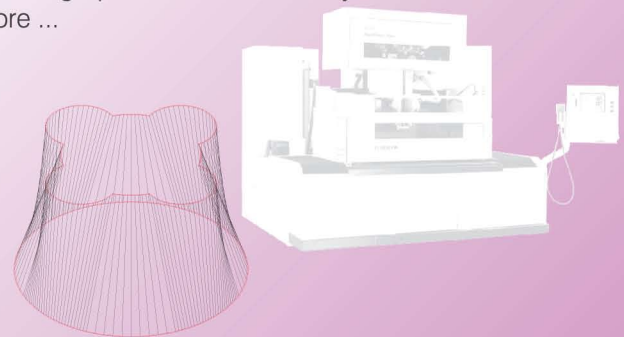
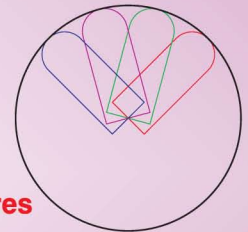
### Productivity Enhancement Features

Able to do full or partial taper in any cut  
 User definable cutting condition data bases  
 Prepared path can be edited with new settings  
 Prepared path is able to copy, rotate and array  
 Able to display cutting perimeter, time and cost  
 Change path color also change the number of cut  
 Able to do overnight cutting without any machinist  
 Prepared path can be posted to different machine formats  
 More...



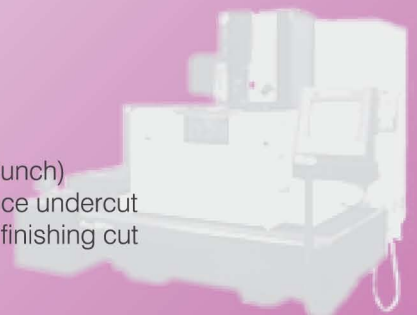
### Fault Checking & Reducing Features

Auto wire offset direction  
 Flexible zero (datum) point  
 No editing of NC file is required  
 WYSIWYG, full display of wire path  
 Able to input clearance for each profile  
 Auto check for short line and highlight it  
 Auto check for small internal corner radius  
 Able to graphic check a manually edited NC file  
 More ...



### Quality Enhancement Features

Auto dwell for corner control  
 Prepare with auto offset side  
 Prepare with auto corner fillet  
 Forward and reverse cut for die profile  
 Overcut is possible to have a negative value  
 Different cutting strategies for insert (Die inside Punch)  
 Different approach and departure pattern to reduce undercut  
 Different cutting strategies for roughing first then finishing cut  
 More...

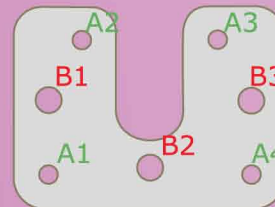
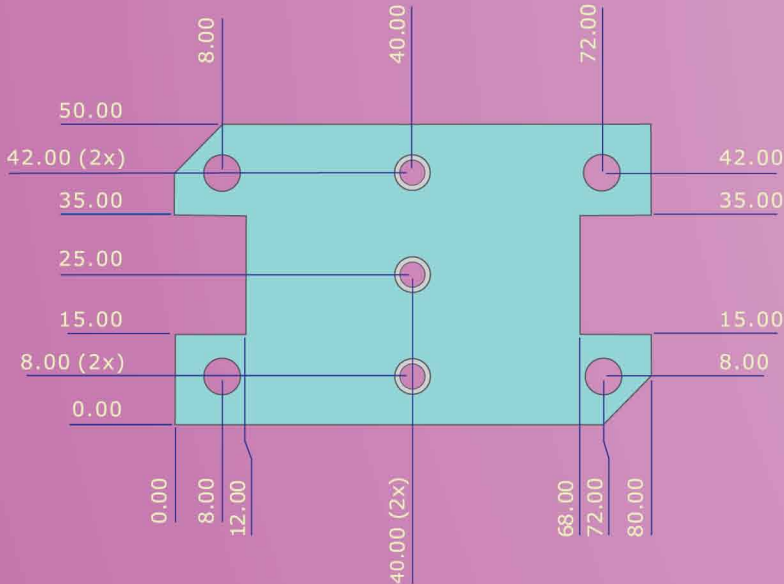




## Autodimension Module

A powerful auto-dimensioning software specially created with fast and powerful ordinate as well as holes listing functions for the Plastic Mold and Press Tool and manufacturing sectors.

**Ordinate Dim** A super productivity tool. 3 seconds that is all required to get the dimension out and no error at all.



### Hole List

TEXT	X	Y	DIA	QTY
A1	-15.0	-1.0	3.0	4
A2	-10.0	19.0		
A3	10.0	19.0		
A4	15.0	-1.0		
B1	-15.0	10.0	4.0	3
B2	0.0	0.0		
B3	15.0	10.0		

### With few hundreds companies using it in the region, you can't be wrong!

3G Group, A-A, Aaron, Acco, Ace Tech, AceWide Group, Advance WireCut, Advanced Tools & Die, Advent, Aeropec, Aerotac, Aevertec, Agate, Agie Charmilles, Aik Huat, AIM Solutions, AkebonoOkaya, Allan Defence, Allied, Alson, Amould, AMS, Amtek Group, Arch, ATA, ATS Automation, AutoSystem, Avantek Group, Avis, Benko, Bentec P & R, Bestwork, BiLink, Bircut, BL, BMS, Carboly, Cariman, Certact, CFM Group, Cheam Ht, CheungWoh Group, Cintechno, Classic, Connor Group, Cosmag, Cosmag Plastic, CustomTooling, Cybron TL, Daepac, Dai-Ichi, Datar DI, DI Mold, DM, Dm2, Dynacast, Dynamold, Dynarco, E W Plastic, Ecoventure, Effective, EH, Enano, Eratech, E-Star, Eubiq, Excel Mould, Express Mold, Exsa, Fabri Technic, Fairway, Fastmo, Full Skill, Full Tech Metal, Future, G&L, Gal-Tech, Global, Grindmills, Grip, G-Tech, Guoxin, Hantong Metal, Harrier, Harvest, High-Tech, Hi-P Int'l, Hook Keng Heng, HYS Plastic, Ichi Seiki, IKO, Improvage, Index Precision, Innovative E.S., Integrated Motion, Inter-Tooling, ITS, J.C. Metal, JE, Jerick, Jig & Tools, Jing Rui, JinLi Group, Jotech Group, Juita Bumi, Juken, JunFu, Jungberg, Juran, K.Y. Sub-Ass., Ka Shin Group, Karrie, KH, Kinsteel, Knight Auto, Koei Tool, KP, LC, Leader, Lek Hung, LHY, Linear, LIS, LI-TEC, LNE, Long Tech, Lucky Mould, Lumonics, M & R mfg., Magnum, Mascast, Matsushita, Mawanco, Maxcraft, MCE, Meiban Group, Metalcraft, Metalform, Metaltec, MG mfg, MI, Micro Technics, Miyoshi, Mizuho, MMI, More Tech, MuarTools, Multitec, Nanyang Poly, NewStar, NewSystem, NewUniverse, Newline, Nidec, Nigitech, Nittoku, Norton, NSK, OnnWah, Optosem, P&T, PMT, PNE, Point, Possehl Elec, Practech, Precision Metal Tech, Prime United, Progress Tool Group, PT Cipta Presisi, PT. Advanced Interconnect, PT. Amtek Plastic Batam, PT. Cahaya Sukses Mandiri, PTC, PWE, Q'son, Restre mfg, Revideo, Richmond-Tech, Riso Seiki, Robex, Robo Machine, Rokko, Roswell, SAI, SakuraTech Group, Sanichi, SBD, SCT, SDP, Seimitsu Tools, Seksun Group, Shimano Group, Shine, Sim Ley Group, Singa Plastics, SinnTech, Sinometal, Sintech, Skilltec, Sky Group, SN, SNA, Sodick, SongTat, SPI (Suzhou), ST Sinn, Stamp Crafts, Star, STD, Steel Junction, Steer, Super Spark, SuperUnion, Supreme, Symmetric, T&G, T&T, TCM (Kunshan), Tech-Global, Techno-Vation, TechTeam, Tek Guthrie, TGC, Tharsonpa, Tipson, Titan, TMX, Top Flyer, Top Tools, Trend Group, Trinitek, TS Mould, U-Can Mould, Unique, UniSteel Group, United mfg, Unity, Universal Metal, Universal Tooling, U-Tool mfg, V.S. Industry, Varian Semicon Eqpt, Wanco Group, Watar, Watson, WeaMax Mechatronic, Yam, Yi Xin, YP Lim ..etc

### REGIONAL CONTACTS:



#### Enggsoft Pte Ltd (Singapore Office)

57 Genting Lane, #01-00, Singapore 349564.  
Tel: +65 6872 6166 Fax: +65 6224 3180



#### China (Shanghai) Rep Office

Unit 102, Blk 55, Lane 215, Deqing Rd., Pudong New Zone, Shanghai 200135 China.  
Tel: +86 13002197158 Fax: +86 21 5038 3152



#### Enggsoft Co., Ltd. (Taiwan Office)

6F, No. 85, Dafu St. Sanmin District, Kaohsiung City, Taiwan. ZIP: 807.  
Tel: +886 7381 9707 Fax: +886 7398 5745



#### Enggsoft USA Rep Office

33442 Western Avenue, Union City, Ca94857, United States.  
Tel: +1 510 380 8899



#### Enggsoft India Rep Office

Peenya Industrial Area, Bangalore, 560 058 India.  
Tel: +91 99001 78557 Fax: +91 99001 78557



#### Enggsoft Thailand Rep Office

22/2 Soi Kanchanapisek 001, Kanchanapisek Rd, Bangbon, Bangkok 10150 Thailand.  
Tel: +66 2451 1452 Fax: +66 2451 1452

Dealer: